

ENGINEERED PUMP SERVICES

- PUMP REPAIR
- REPLACEMENT PARTS
- INSPECTION SERVICES
- PERFORMANCE EVALUATIONS
- FIELD SERVICES & ENGINEERING



www.epspumps.com



ABOUT US



REPUTATION MATTERS

ENGINEERED PUMP SERVICES, INC. is an employee owned company founded in 1987 by a small group of Engineers. For over 30 years, we have celebrated continued success. Our leadership team doesn't sit behind a desk, they are in the field making a difference!

“ *EPS does more than replace parts. The shop ensures that the refurbished parts are as good or better than new. I feel that they understand pumps better than other repair facilities. The sales and service personnel understand the project at the engineering level and can answer technical questions, not just refer the question to someone else. Our local personnel are very easy to work with and are completely proficient with details of the job.*
- Power Generation Customer

OUR MISSION

To help our customers
SUCCEED by being even better
than we were yesterday.

OUR VISION

To be the most
TRUSTED service provider
in the industry.



COMMUNICATION • COLLABORATION • CARING

WE HAVE THE EXPERIENCE

INDUSTRIES SERVED

- ▶ Power Generation
- ▶ Municipal Power, Water & Wastewater
- ▶ Steel Mills
- ▶ Pulp & Paper
- ▶ Mining & Coal Fields
- ▶ Refineries
- ▶ Refined Product Pipelines
- ▶ Chemical & Processing Plants

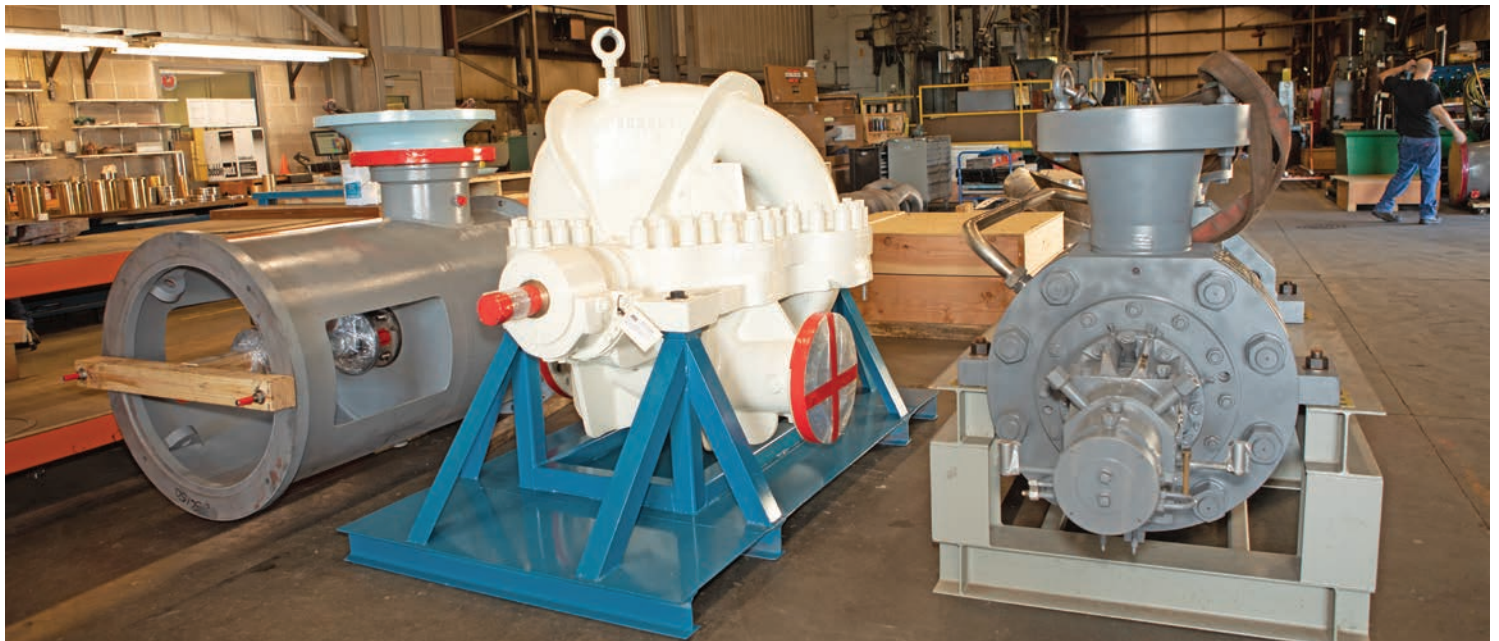
TOP PUMP TYPES SERVICED

1. Boiler Feed Pumps
2. Large Vertical Circulating Pumps
3. Condensate Pumps
4. Descale Pumps
5. Balance of Plant

MAJOR BRANDS SERVICED

- | | |
|-------------------|----------------|
| ▶ Allis Chalmers | ▶ Johnston |
| ▶ Buffalo | ▶ KSB |
| ▶ Byron Jackson | ▶ Layne |
| ▶ C.H. Wheeler | ▶ Pacific |
| ▶ DeLaval | ▶ Peerless |
| ▶ Ebara | ▶ Patterson |
| ▶ Fairbanks-Morse | ▶ Sulzer |
| ▶ Floway | ▶ Tankaflo |
| ▶ Flowserve | ▶ Union |
| ▶ Goulds | ▶ Weir |
| ▶ Ingersoll Rand | ▶ Westinghouse |
| ▶ Truflow | ▶ Worthington |

“ We received the pump early enough to install prior to our unit coming back. I have personally dealt with EPS for 12 plus years in a management position and our plant has been doing business with EPS for close to 30 years, we have a good working partnership. - Power Generation Customer



TAKING PRIDE IN A JOB WELL DONE



TURNKEY SERVICES

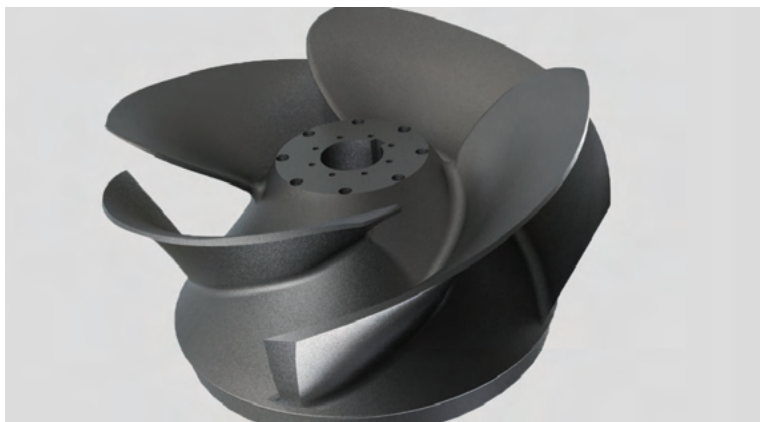
SHOP INSPECTION

- Firm price quotes
- Glass bead or aluminum oxide blast cleaning
- Magnetic particle examinations
- Ultrasonic & X-ray examinations
- Full dimensional examinations and correlations
- Hardness & material evaluations
- Comprehensive inspection reports
- Complete photographic records



ENGINEERING

- Direct engineering support
- Comprehensive repair plans
- Reverse engineering & 3D modeling
- Design modification upgrades
- Life extension studies
- Project management
- An independent point of view from the vast experience with various OEM designs



MANUFACTURING & REPAIR

- ASME/AWS welding to qualified procedures
- Full machining capabilities
- Replacement parts manufacturing
- Pattern equipment and castings
- Dynamic balancing
- Vertical assembly of pumps
- Comprehensive closing reports
- Standard one year warranty
- Quality Assurance



FIELD SERVICE ASSISTANCE

- Experienced field service technicians
- 24 / 7 / 365 availability
- Fully documented field reports
- Tools and tool boxes
- Labor and technical experts
- Laser alignment services



CAN DO ATTITUDE

TECHNOLOGICAL DIFFERENCE

CREAFORM METRASCAN 3D

- Quick 3D model generation
- Accuracy better than 0.0012 inches
- Part-to-CAD analysis
- Historical part inventory (Catalog of Prints)
- Obsolete parts manufacturing
- Part modification
- Capable of scanning any type of material
- Portable design allows for on-site service
- Large scale modeling capabilities
- Higher level of quality assurance



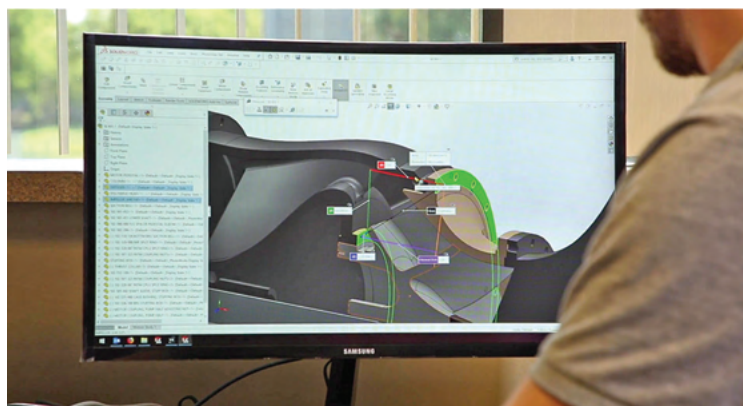
MATERIAL ANALYSIS EQUIPMENT

- XRF handheld material analyzer
- Alloy ID with light element detection
- Material and grade identification
- Weld bead analyzing capable
- On-Site element analysis
- Manufacturing
- Material upgrades



AFTERMARKET SOLUTIONS

- Modifying parts to meet existing conditions
- Material and design upgrades
- Pump parts made by pump experts
- Stellite, Nitrite, Chrome & Laser Cladding
- Coatings and ceramics

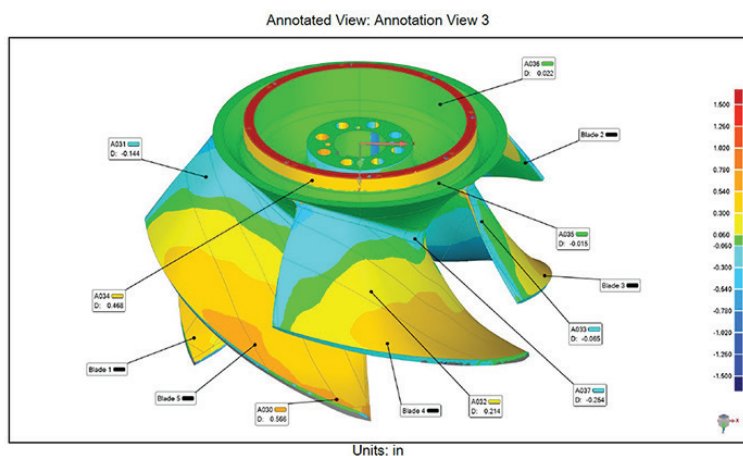


QUALITY ASSURANCE

- 3D CAD Systems (Solid Works)
- Parts are manufactured & tested for the highest levels of quality & precision
- JobBoss production software
- All materials certified through traceable documentation

PERFORMANCE EVALUATIONS

- On-site performance testing
- Vibration analysis
- Failure mode analysis
- Performance and flow analysis



HONEST • RELIABLE • EXPERIENCED



PUMP FOCUSED REPAIR SHOP



Custom Built Facility

Established in 1996 | Over 38,000 sq. ft. of operating floor space | Located 20 miles SW of Milwaukee, WI.

ENGINEERED PUMP SERVICES, INC. has customized our pump shop from the ground up. We have created multiple specialty stations that cater specifically to the many needs of different pump types. We have the equipment and personnel to tackle any pump repair. EPS has also invested in new machinery that will get the job done with the highest level of quality and efficiency.

CLEAN REPAIR SHOP



MACHINING BAY



MAIN ERECTING BAY



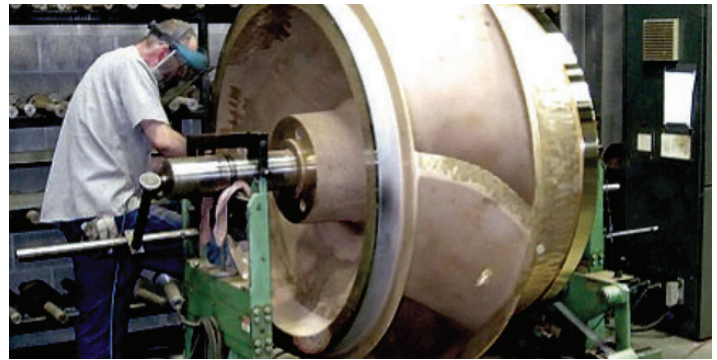
QUALITY • EXPERIENCE • INNOVATION

REPAIR SHOP CAPABILITIES

ENGINEERED PUMP SERVICES, INC. has the repair capabilities and technical expertise to complete the vast majority of your manufacturing requirements in house.

IN HOUSE CAPABILITIES

- Manual turning up to 33" Swing & 312" Length
- Vertical Boring up to 129" Swing & 87" Tall
- Boring bar capabilities to 108"(x); 84"(y); 84"(z)
- CNC vertical boring, 66% improved efficiency
- CNC lathes & mills, 50% improved efficiency
- GMAW, SMAW & TIG welding to EPS qualified procedures
- Two assembly pits dedicated to boiler feed pumps
- Three assembly stations for split case pumps
- Two stations for larger vertical pump assembly, with a maximum of 39' under hook & crane.
- Lifting capabilities of 40+ tons for assembled pumps
- Hard bearing dynamic balancing up to 6,500 lbs/ 20'L
- Blast media cleaning to 24' x 14' x 10' tall
- Solvent tanks and automated heated parts washer
- Airless coating system for enamel & epoxy coatings
- Large storage area to ensure all finished parts remain clean until they are ready for assembly



ALLIANCE CAPABILITIES

- Qualified NDT specialists in MPI, UT, & DP
- Chrome plating & grinding services
- Laser cladding & metalized coatings
- Babbitting services for journal bearing repairs
- Hard, graphite & rubber bearing resources
- Mechanical seals, components & repairs
- Pattern makers for sand & investment castings
- Local stainless and bronze foundries
- Local material warehouses for quick access
- Fabrication & material forming support
- Blanchard grinding, EDM & water jet cutting
- Additional support for line boring & large turning
- Metal stitching for large cast iron repairs
- Trucking brokers for onsite pickup & delivery
- Advanced vibration consultation
- Field machining, welding & heat treating

FULLY COMMITTED



Our Guarantee

We guarantee our services, so you can guarantee yours.

Our knowledgeable assemblers and machinists as well as our onsite engineers ensure we will continue to serve our customers at the high quality level they expect.

Whatever your pump needs may be, Engineered Pump Services, Inc. is here to help!

